

# SUNNY

Focusing on luxury fragrance products



## **110ml green cute little glass candle holders with lid for home decorations candle containers**

***Focusing on luxury fragrance products in the latest 10 years, Sunny Glassware is the supplier of 80% fragrance brands in the United States.***

***We are the exclusive supplier of Nest Fragrance, Candle Lite, UGG etc popular brands, which 80% aroma vessels are from Sunny Glassware. With our strong support, customers fastly develop and from small workshop to industry leaders.***

**Product Description**

---



Item	SGHY19082611
	Body: Top dia:65mm Bottom dia: 65mm Height: 57mm Weight:155g Capacity: 110ml
	Lid: Top dia:55mm Height: 40mm Weight:61g
	MOQ:3000pcs

for your choice	<ol style="list-style-type: none"> <li>1. Any logo printing on the body</li> <li>2. Any color painted, frost, electroplate, pattern laser carver for the finish</li> <li>3. Special package like shrink wrap, color gift box, white gift box etc</li> <li>4. Open new mould for the glass, wood, plastic or metal as you like</li> <li>5. Different size and shapes meet your needs</li> </ol>	
sample time	1. 5 days if at exist shaped and size of glass	2. 15 days if need new shape or size of glass
packing	Normal packing, Individual gift box, PVC box, window box, color box, white box, etc.	
product capacity	500,000~1,000,000 pcs per month	
delivery time	Within 35 days after the sample and order confirmed	
payment term	30% deposit by T/T in advance and the balance against the copy of B/L	
shipment	By sea, by air, by Express and your shipping agent is acceptable	

## Detailed Images

**\*All the images on this site are copyrighted by Sunny Glassware. Any unauthorized reprinting will be regarded as copyright infringement.\***













**Company Information**

---



# Who We Are



## Shenzhen Sunny Glassware Co.,Ltd

- More than 25 years experience glassware and ceramic ware supplier in China
- Innovative design capacity
- ISO9001 certificate approval
- Candle Holders, Bottles, Drinkware focus

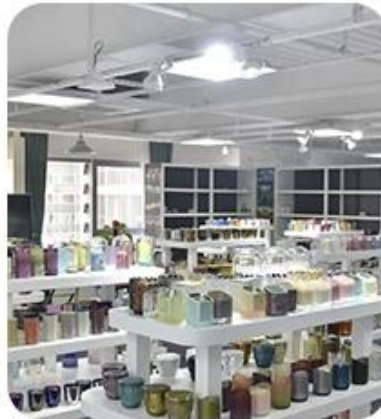
Modest

Passion

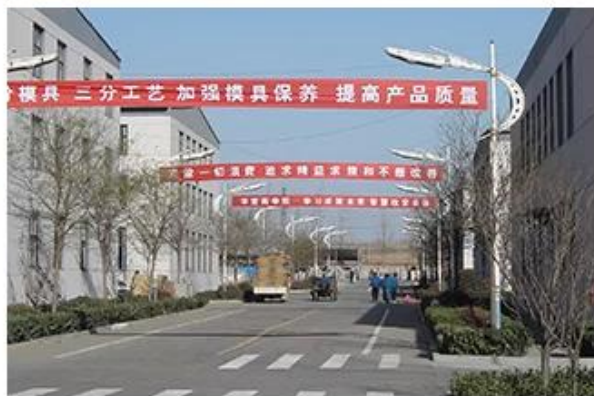
Collaborative



## · SAMPLE ROOM ·



· FACTORY ·







# Surface Treatment

10+ production lines



□ Spraying



□ Engraving



□ Electroplating



□ Silk-screen



- Spraying
- Engraving
- Electroplating
- Silk-Screen



# How to Make It

(Glassware Craft)

Normally Automatic Close Mold Machine-Pressed Craft is applied to make candle holders which meet following features:

- Top diameter large than bottom
- Mass production with high MOQ
- No embossed pattern on outer wall
- Simple pattern inwall is available
- Inwall Max-Min thickness: 1.5~10mm
- Bottom thickness: 4~30mm
- Low cost
- Simple shape containers

## Machine Pressed



Welcome to our **video channel** as following links to watch Sunny Company introduction and products presentation  
[https://www.youtube.com/channel/UCcnnb\\_BDNnGW-w2W6AZmoJg](https://www.youtube.com/channel/UCcnnb_BDNnGW-w2W6AZmoJg)  
<https://youtu.be/esREMsXEgrw>

## **Packaging & Shipping**

---



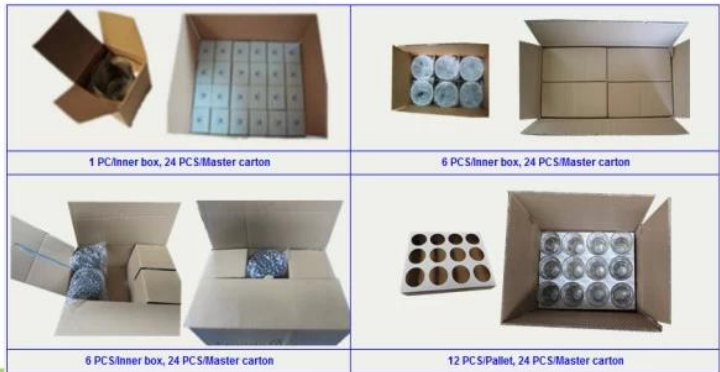






# Commonly Package

- ❑ Carton
- ❑ Palletizing
- ❑ Gift box
- ❑ Normal safe export packaging



## Carton

## Gift Box



## Pallet



# Logistics Service

- Kitting
- Kabeling
- Repacking
- Pallet etc



## Packing & Loading

**20 YEARS FORWARDER EXPERIENCE**  
 · Focus · Professionalism · High Efficiency

WHAT WE CAN DO

**WCA**

- Air Freight
- Sea Freight
- Courier & Express
- Trucking & Custom Clearance

## Shipping

- By Sea
  - By Air
  - By Courier
- \* Value-added logistics offered by our owned logistics team
- \* Your logistics agents are available

## Certifications

Click [here](#) for more certificates about Sunny Glassware and our products.

### CERTIFICATES



## FAQ

### 1) Can you combine many items assorted in one container in my first order?

Yes, we can. But the quantity of each ordered item should reach our MOQ.

### 2) If any quality problem, how can you settle it for us?

When discharging the container, you need to inspect all the cargo. If any breakage or defect products were founded, you must take the pictures from the original carton. All the claims must be presented within 15 working days after discharging the container. This date is subject to the arrival time of container.

### 3) why you choose us?

1. We have rich experiences in glassware trade for more than 20 years and the most professional team.
2. We have 10 production line and can manufacture 15 million pieces per month, we have strict processes enable us to maintain an acceptance rate above 99% .
3. We work with more than 1800 clients in about 80 countries.
4. We offer professional one-stop world-wide logistics service.

### 4) Can we get your free samples?

Yes, you can. Our **Samples are free** for the customers who confirm order. But the freight for express is on buyer's

account.

**5) How about your MOQ?**

Different kind products will be different MOQ, for some glassware in stock, small orders are acceptable.

**6) How many people in your R&D department?**

We have 5 professional designers, and they will develop 15 innovative designs monthly.

**7) Can you give me a discount about the price?**

The price depends on your quantity, if you want good price with small order, you can make more quantity in one time, and leave them in our warehouse, we will keep the goods for you until you need.



**BACK TO HOMEPAGE**