

## Why Choose Us



### Excellent After-service

problem solved within 24 hours

### Provide Strong Support

customers rapidly develop from small workshop to industry leaders



### Win Good Profit

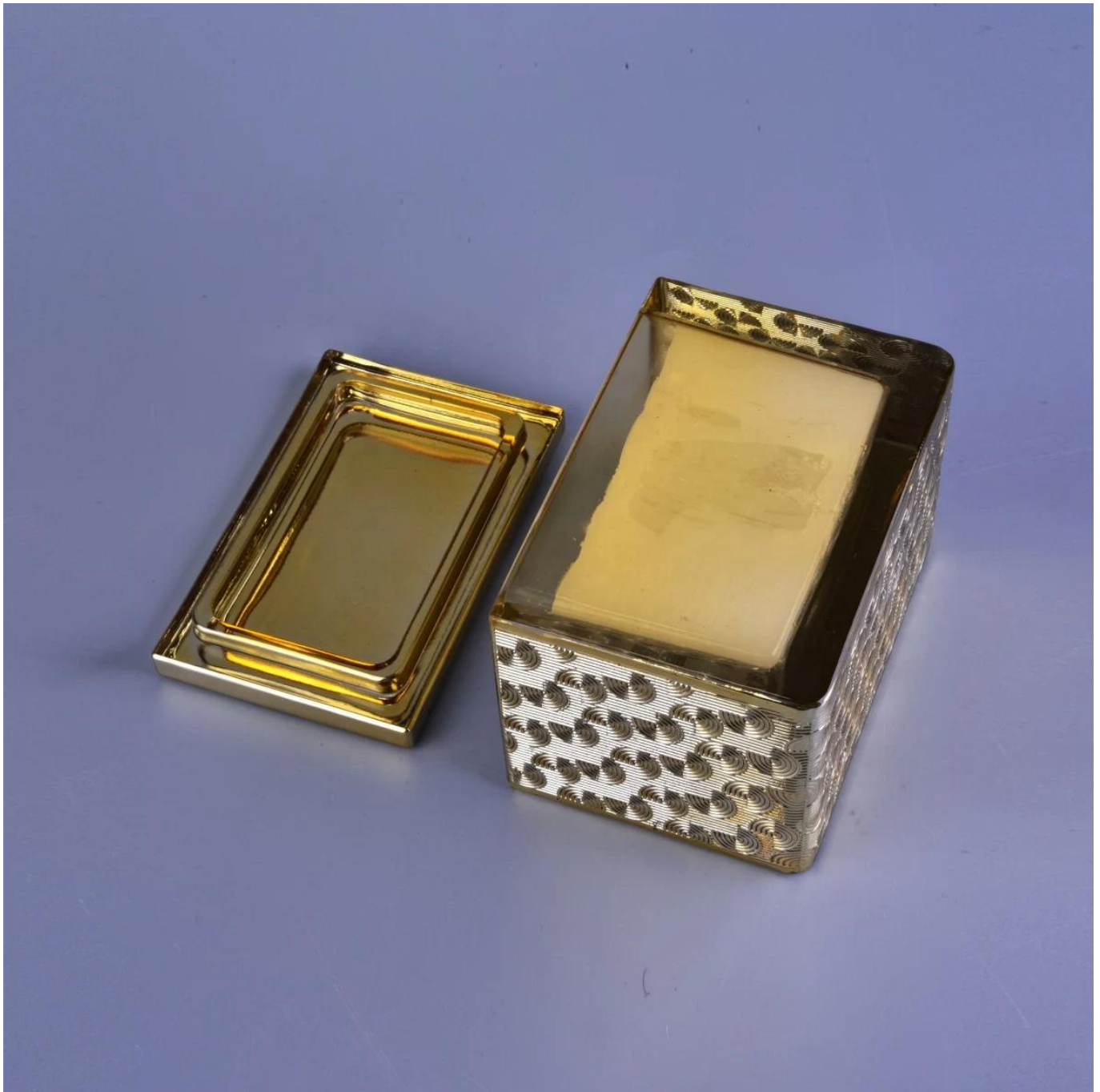
All customers have good profit and get 30% sales increase every year

## Product Description









#### Specification

- Sample lead time 5 days if at exist shaped and size of candle jar  
15~30 days for new shape or size of candle jar
- OEM/ODM order We could create new mold for your own design  
Moreover,we could design for you by your own idea to be a real product
- Inspection Inspect the goods by AQL standard which has extra inspect steps  
Accept third party inspection
- Shipment By sea,by air,by Express and your shipping agent is acceptable  
We have own logistic company Sunny Worldwide to provide you sea& air freight shipment

#### Packing & Delivery

To better ensure the safety of your goods, professional, environmentally friendly, convenient and efficient packaging services will be provided.

# Different From The Peer



Own professional shipping company( Shenzhen Sunny Worldwide logistics)



20+ years freight history and WCA members.

## Company Profile

Sunny Glassware was established by in 1992, we have our own 1,800 square meters Grade A office building in Shenzhen, China. There are more than 5,000 unique samples located in the sample room for selection.

Exhibition



# EXHIBITION

We have taken part in various exhibitions since 2002 year, like Shanghai, London, Las Vegas, Hongkong show.

Certifications



# CERTIFICATIONS



## FAQ

1) Can you combine many items assorted in one container in my first order?

Yes, we can. But the quantity of each ordered item should reach our MOQ.

2) If any quality problem, how can you settle it for us?

When discharging the container, you need to inspect all the cargo. If any breakage or defect products were founded, you must take the pictures from the original carton. All the claims must be presented within 15 working days after discharging the container.

This date is subject to the arrival time of container.

3) why you choose us?

1. We have rich experiences in glassware trade for more than 20 years and the most professional team.
2. We have 10 production line and can manufacture 15 million pieces per month, we have strict processes enable us to maintain an

acceptance rate above 99% .

3. We work with more than 1800 clients in about 80 countries.

4. We offer professional one-stop world-wide logistics service.

4) Can we get your free samples?

Yes, you can. Our Samples are free for the customers who confirm order. But the freight for express is on buyer's account.

5) How about your MOQ?

Different kind products will be different MOQ, for some glassware in stock, small orders are acceptable.

6) How many people in your R&D department?

We have 5 professional designers, and they will develop 15 innovative designs monthly.