

-----Sunny-----

Focusing on luxury fragrance products in the latest 10 years,
we are the supplier of 80% fragrance brands in the United States.



Sunny Glassware is the ODM exclusive supplier for 80% fragrance brands in Europe and America.No second one in China!

Sunny's QC team is much more professional and stricter than customers'.No second one in China!

The largest and the most abundant sample room in Asia.No second one in China!

Product Description

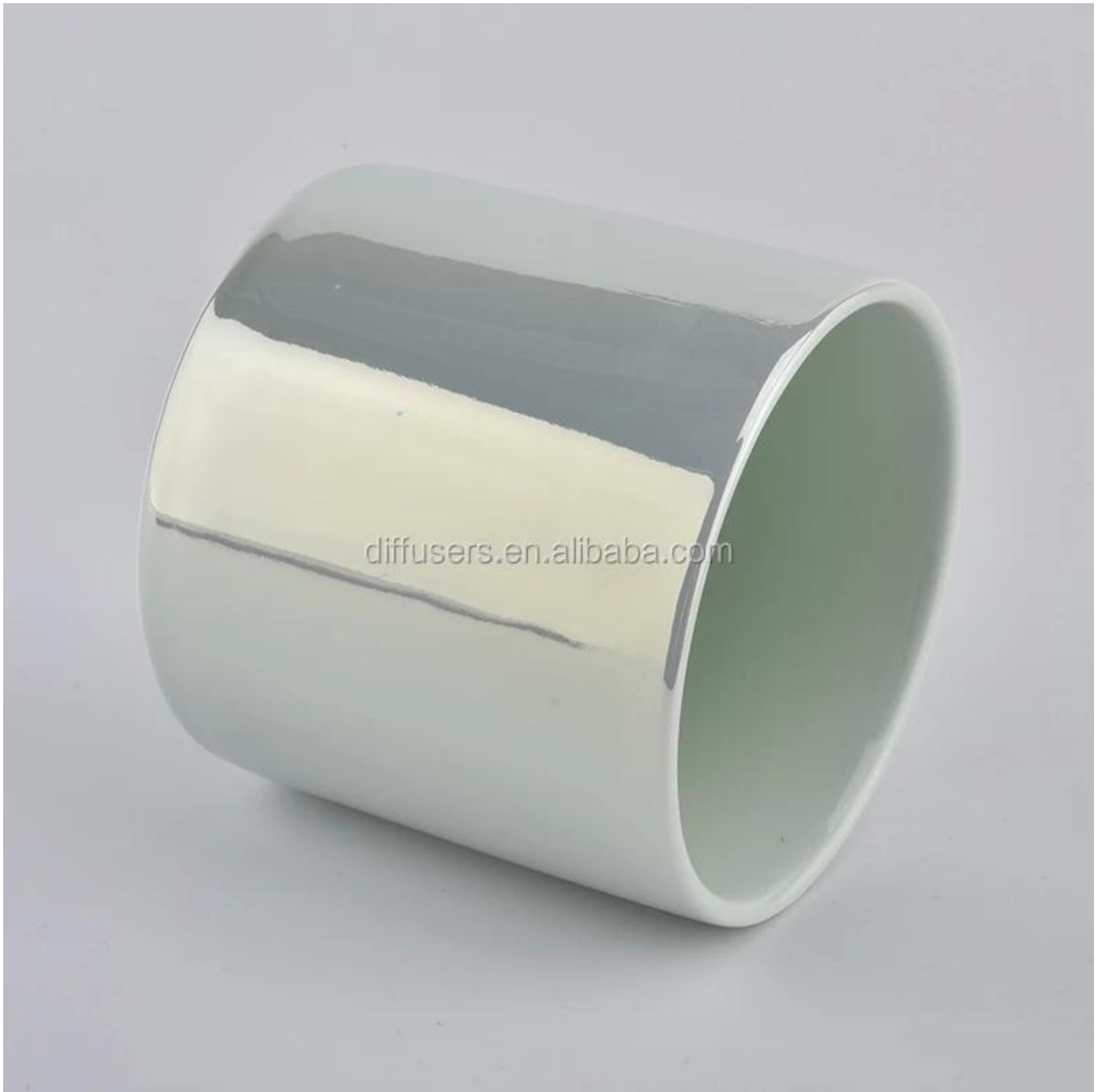
animal ceramic candle jar with animal lid





diffusers.en.alibaba.com











diffusers.en.alibaba.com







diffusers.en.alibaba.com



- ***All the images on this site are copyrighted by Sunny Glassware.***
- ***Any unauthorized reprinting will be regarded as copyright infringement.***

Product name	Ceramic candle holder with deboss design
--------------	--

Flexiable choices	1. OEM/ODM order is acceptable for all kinds of ceramic candle holder 2. It can be glazed any color on the candle holder with deboss pattern 3. Special package like shrink wrap, color gift box, white gift box etc 4. We could create new mold for your own design for the new ceramic candle jars 5. inspection the ceramic candle holders by AQL standard	
Sample time	1 days for availbale samples	25~30 days for new samples
Packing	Normal packing,Individual gift box, PVC box, window box, color box, white box, etc.	
Promise	Sunny Glassware strictly protect the customers' designs, all the newly designed items from us haven't been copied in three years.	
Delivery time	Within 45~60 days after the sample and order confirmed	
Payment term	30% deposit by T/T in advance and the balance against the copy of B/L	
Shipment	By sea,by air,by Express and your shipping agent is acceptable	

Our Services

Someone ask me, why Sunny Glassware is **the supplier of 80% fragrance brands in the United State**, take a second to listen to my story about candle holders order, you will understand Sunny always stay with you whatever it happens.

Last summer was really a great experience to us, J placed a big order with mass candle holders to Sunny Glassware at August 2018, everyone was so exciting and wanted to make it perfect .

Everything goes very well at the beginning, fast move, perfect communication, all is good. A small accessory became a big bomb which is out of our expectation, J wanted us to buy this small accessory in China but he told us this is a very difficult stuff, we digged 7 factories and one of them told us they can produce it. We are happy to know that and we took J and his designer K to the factory to have a look, well, J is really a smart person , he told me this factory can not produce that stuff when he first step into the workhouse, because he did not see a machine that can produce it since he has visited a factory in the US who can produce it. We have been asking the factory for a couple of questions and they were getting impolite and inpatient, J could tell from his face and he just run away very angry. I feel very sorry to J because we did not check it carefully with this factory and made him coming with no efforts. J is really great person and he never angry on me, he introduced a new factory that he found from his friends and wanted us to go, it was close to Chinese Lunar New Year, we booked the first class air tickets and our purchase manger Allen fly to the factory himself, it turns out this factory can not produce it as well, J has to produce it in the US and ship it to us for application finally.

The first time when he shipped 200K pcs , all were melt because of hot temperature, it's really a big waste of material and air freight, it really took so long time to get the second shipment, timing left to us is very tight, we found out a solution which is to air ship it by cold chain transport and keep the accessories along with air condition 24 hours, we had to increase labor costs to have people work 6 more hours a day to get candle holders done in time, all problem resolved and things produced well.

Summer is the typhoon season we call it, two big typhoon in a month forced the custom to close the port which is the closest port to our factory, the delivery time was being a problem for J, we had to ship all 20

containers to the port 1000 Kms away to get those shipped in time, but this increase the extra truck costs to us like USD 16,000 and all absorbed by Sunny.

Finally, **no one get compensated, all things shipped in time**, we all are happy with that, this enable us to be a trust worthy partner to J, and **our business is getting prosperous day by day!**

C COMPANY PROFILE

About us

VIEW MORE ▶

Who We Are



Shenzhen Sunny Glassware Co.,Ltd

- More than 25 years experience glassware and ceramic ware supplier in China
- Innovative design capacity
- ISO9001 certificate approval
- Candle Holders, Bottles, Drinkware focus

Modest

Passion

Collaborative



SAMPLE ROOM



Shenzhen Sunny
深圳市美陽玻璃製品有限公司

Exhibition



A EXCELLENT SERVICE TEAM *About us*

[VIEW MORE ▶](#)



FAQ

If you have more questions pls contact me or send inquiry directly